

BRAVS FIVE DEPARTURE (RNAV)

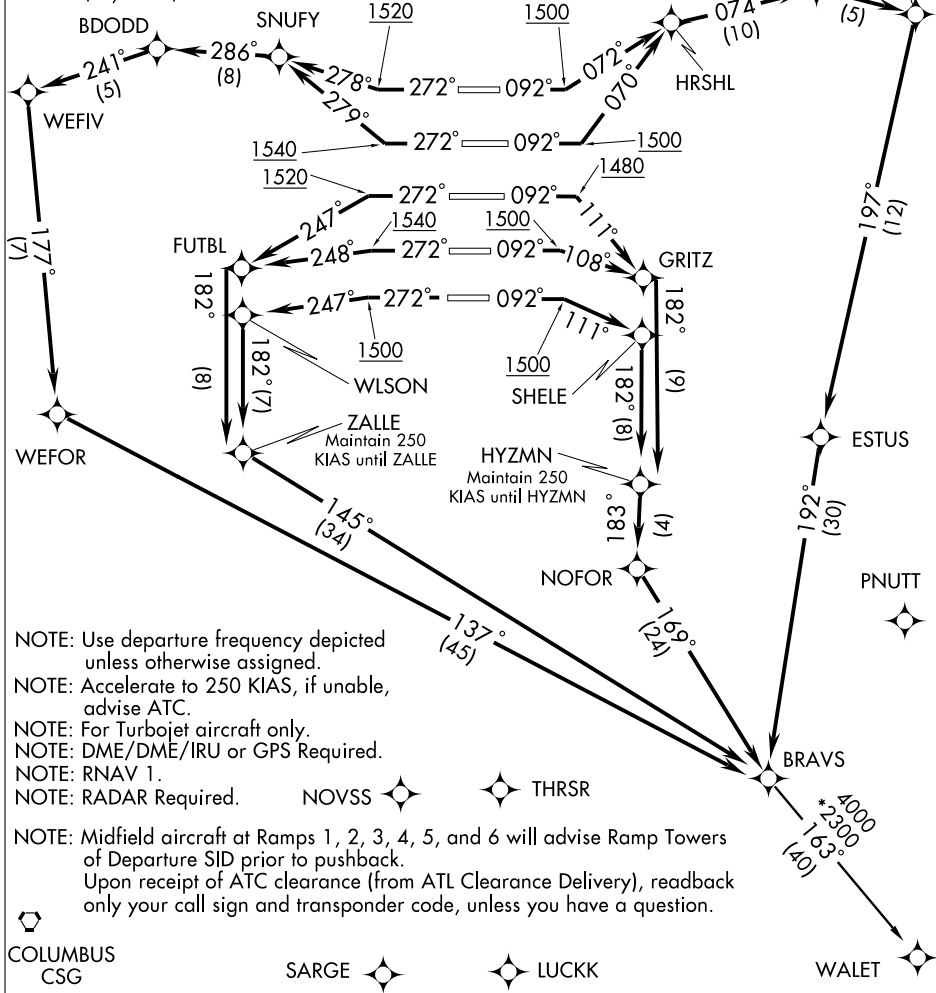
SL-26 (FAA)

ATLANTA, GEORGIA

ATIS DEP 125.55
 CLNC DEL 118.1
 GND CON
 121.9 381.6 (Rwys 8L-26R, 8R-26L)
 121.75 381.6 (Rwys 9L-27R, 9R-27L)
 121.65 381.6 (Rwy 10-28)
 ATLANTA TOWER
 119.1 381.6 (Rwy 8L-26R)
 125.325 381.6 (Rwy 8R-26L)
 119.3 381.6 (Rwy 9R-27L)
 123.85 381.6 (Rwy 9L-27R)
 119.5 381.6 (Rwy 10-28)
 ATLANTA DEP CON
 125.7 (Rwys 8L-26R, 8R-26L)
 125.65 (Rwys 9L-27R, 9R-27L)
 135.375 (Rwy 10-28)

TAKEOFF MINIMUMS:

Rwy 8R, 300-1 or Standard with minimum climb of 247' per NM to 1200, ATC climb of 500' per NM to 1500.
 Rwy 9L, 300-1¼ or Standard with minimum climb of 234' per NM to 1200, ATC climb of 500' per NM to 1480.
 Rwy 8L, 9R, 10, 26L, 26R, 27L, 27R, 28:
 STANDARD with the following ATC climb rates:
 Rwy 8L, 9R, 10, 28:
 ATC climb of 500' per NM to 1500.
 Rwy 26L, 27L:
 ATC climb of 500' per NM to 1540.
 Rwy 26R, 27R:
 ATC climb of 500' per NM to 1520.



- NOTE: Use departure frequency depicted unless otherwise assigned.
- NOTE: Accelerate to 250 KIAS, if unable, advise ATC.
- NOTE: For Turbojet aircraft only.
- NOTE: DME/DME/IRU or GPS Required.
- NOTE: RNAV 1.
- NOTE: RADAR Required.

NOTE: Midfield aircraft at Ramps 1, 2, 3, 4, 5, and 6 will advise Ramp Towers of Departure SID prior to pushback. Upon receipt of ATC clearance (from ATL Clearance Delivery), readback only your call sign and transponder code, unless you have a question.

COLUMBUS
CSG

SARGE LUCK

(Continued on next page)

NOTE: Chart not to scale

BRAVS FIVE DEPARTURE (RNAV)

ATLANTA, GEORGIA

SE-4, 01 JUL 2010 to 29 JUL 2010

SE-4, 01 JUL 2010 to 29 JUL 2010