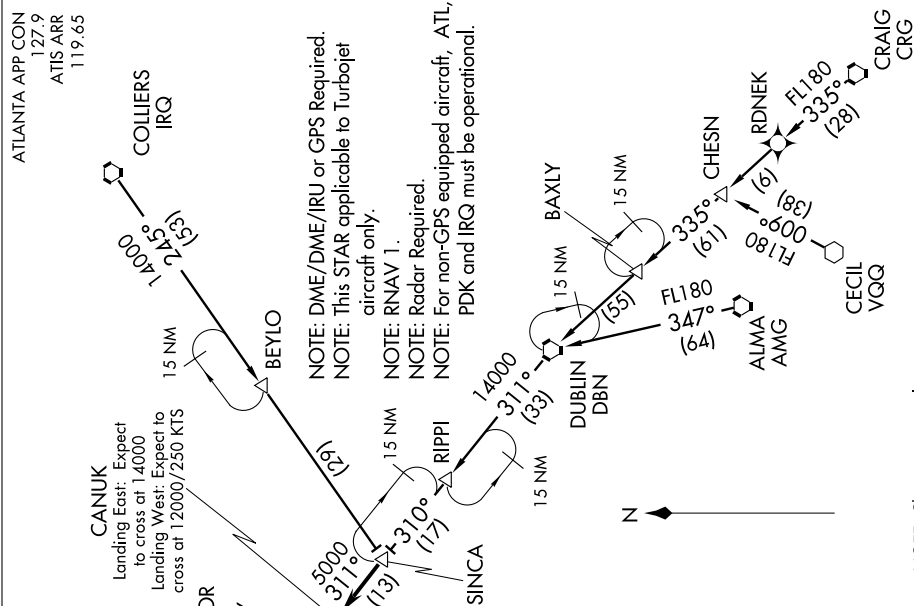


CANUK EIGHT ARRIVAL (RNAV)

SE-4, 01 JUL 2010 to 29 JUL 2010



NOTE: DME/DME/IRU or GPS Required.
NOTE: This STAR applicable to Turbojet aircraft only.

NOTE: RNAV 1.
NOTE: Radar Required.

NOTE: For non-GPS equipped aircraft, ATL, PDK and IRQ must be operational.

CANUK
Landing East: Expect to cross at 14000
Landing West: Expect to cross at 12000/250 KTS



NOTE: Chart not to scale.

ALMA TRANSITION (AMG.CANUK8):
CECIL TRANSITION (VQO.CANUK8):
COLLIERS TRANSITION (IRQ.CANUK8):

From SINCA via 311° track to CANUK, then via 310° track to HUSKY, then via 310° track to ZAMAS, thence via assigned runway transition.
Landing East Rwy 10, 9L/R: From over ZAMAS via 310° track to BOJAA, then via 272° track to FOGOG, then via 272° track to SOTRE, then via 272° track to HESPI, then via 272° heading. Expect radar vectors.
Landing East Rwy 8L/R: From over ZAMAS via 330° track to DOEVR, then via 272° track to NOFV, then via 272° track to NOTRE, then via 272° track to WOTBA, then via 272° heading. Expect radar vectors.
Landing West Rwy 26L/R, 27L/R, 28: From over ZAMAS via 310° track to BOJAA, then via 272° track to FOGOG, then via 272° track to SOTRE, then via 272° track to HESPI, then via 272° heading. Expect radar vectors to final approach course after ZAMAS.

LOST COMMUNICATIONS:
EAST OPERATIONS: At HESPI fly heading 360°, maintain 4000; intercept and execute ILS or LOC Rwy 10 approach. If unable, proceed to ATL VORTAC and hold, maintain 4000.
WEST OPERATIONS: At ZAMAS track to SOFOR, fly heading 360°, maintain 4000; intercept and execute ILS or LOC Rwy 28 approach. If unable, proceed to ATL VORTAC and hold, maintain 4000.

SE-4, 01 JUL 2010 to 29 JUL 2010