

SE-4, 01 JUL 2010 to 29 JUL 2010

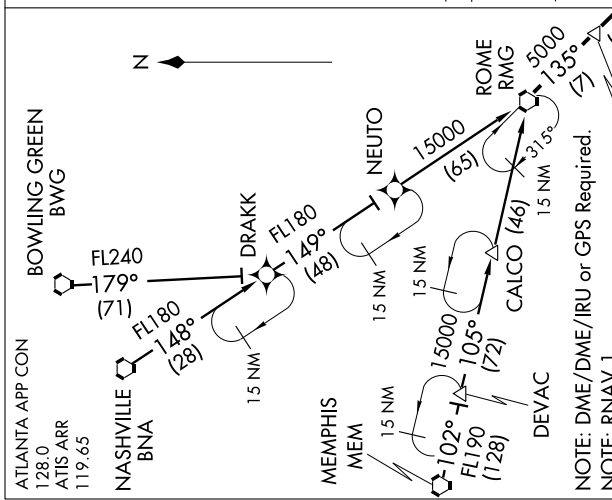
**BOWLING GREEN TRANSITION (BWG.ERLIN6):**  
**MEMPHIS TRANSITION (MEM.ERLIN6):**  
**NASHVILLE TRANSITION (BNA.ERLIN6):**

From RMG VORTAC via 135° track to ERLIN, then via 135° track to DALAS, then via 135° track to STUTZ. Thence via assigned runway transition.  
 Landing West Rwy 26L/R: From over STUTZ via 135° track to NOFIV, then 092° track to FANEW, then via 092° track to HAVAD, then via 091° track to IGEBE, then via 091° heading. Expect radar vectors.

Landing West Rwy 28, 27L/R: From over STUTZ via 156° track to FOGOG, then then via 092° track to BOJAA, then via 092° track to HEDEG, then via 092° track to SOFOR, then via 092° heading. Expect radar vectors.

Landing East Rwy 8L/R, 9L/R, 10: From over STUTZ via 135° track to NOFIV, then 092° track to FANEW, then via 092° track to HAVAD, then via 091° track to IGEBE, then via 091° heading. Expect radar vectors to final approach course after STUTZ.

**LOST COMMUNICATIONS:**  
**WEST OPERATIONS:** At IGEBE fly heading 180°, maintain 5000; intercept and execute ILS or LOC Rwy 26R approach. If unable, proceed to ATL VORTAC and hold, maintain 5000.  
**EAST OPERATIONS:** At STUTZ track to WOTBA, fly heading 180°, maintain 5000; intercept and execute ILS or LOC Rwy 8L approach. If unable, track to ATL VORTAC and hold, maintain 5000.



**NOTE:** DME/DME/IRU or GPS Required.  
**NOTE:** RNAV 1.  
**NOTE:** Radar Required.  
**NOTE:** Chart not to scale.

**STUTZ**  
 Landing East: Expect radar vectors to final approach course after STUTZ.  
 Landing West Rwy 26L/R: Expect radar vectors to final approach course after IGEBE.

**ATLANTA**  
 Landing West Rwy 28, 27L/R: Expect radar vectors to final approach course after SOFOR.

**NOTE:** This STAR applicable to Turbojet aircraft only.  
**NOTE:** For non-GPS equipped aircraft: MEM Transition-SQS and GAD must be operational; BWG and BNA Transitions-GQO and RMG must be operational.

SE-4, 01 JUL 2010 to 29 JUL 2010