

FLCON FOUR ARRIVAL (RNAV)

SE-4, 01 JUL 2010 to 29 JUL 2010

- MONTEBELLO TRANSITION (MOL.FLCON4):
- SNOWBIRD TRANSITION (SOT.FLCON4):
- SPARTANBURG TRANSITION (SPA.FLCON4):

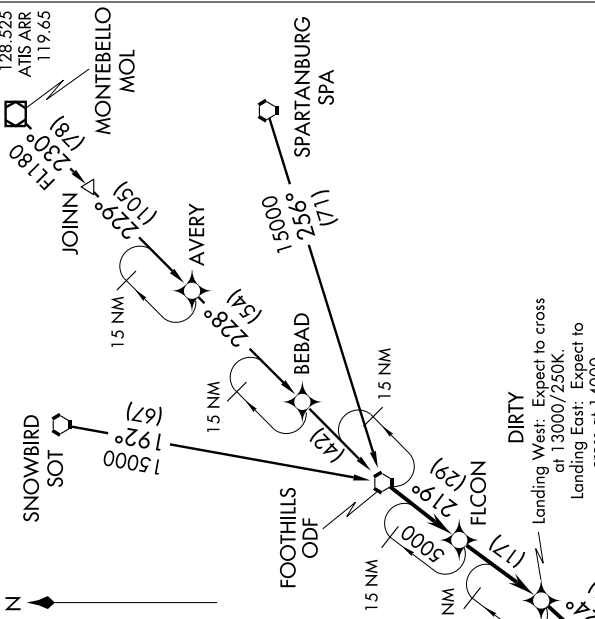
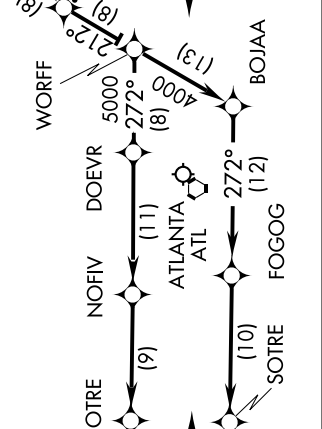
From ODF VORTAC via 219° track to FLCON, then via 219° track to DIRTY, then via 224° track to BYRDS, then via 224° track to COSEL, then via 212° track to WORFF, thence via assigned runway transition.
 Landing East Rwy 8R/L: From over WORFF via 272° track to DOEVR, then via 272° track to NOFIV, then via 272° track to NOTRE, then via 272° track to WOTBA, then via 272° heading. Expect radar vectors.
 Landing East Rwy 10, 9L/R: From over WORFF via 212° track to BOJAA, then via 272° track to FOGOG, then via 272° track to SOTRE, then via 272° track to HESPI, then via 272° heading. Expect radar vectors.
 Landing West Rwy 26L/R, 27L/R, 28: From over WORFF via 272° track to DOEVR, then via 272° track to NOFIV, then via 272° track to NOTRE, then via 272° track to WOTBA, then via 272° heading. Expect radar vectors to final approach course after COSEL.

LOST COMMUNICATIONS:

WEST OPERATIONS: At COSEL track to IGEBE, fly heading 180°, maintain 5000; intercept and execute ILS or LOC Rwy 26R approach. If unable, proceed to ATL VORTAC and hold, maintain 5000.
EAST OPERATIONS: At WOTBA fly heading 180°, maintain 5000; intercept and execute ILS or LOC Rwy 8L approach. If unable, proceed to ATL VORTAC and hold, maintain 5000.

WOTBA
Landing East Rwy 8L/R:
Expect radar vectors to final approach course after WOTBA.

HESPI (5)
Landing East Rwy 10, 9L/R:
Expect radar vectors to final approach course after HESPI.



DIRTY
Landing West: Expect to cross at 13000/250K.
Landing East: Expect to cross at 14000.

COSEL
Landing West: Expect radar vectors to final approach course after COSEL.

- NOTE: DME/DME/IRU or GPS Required.
- NOTE: This STAR applicable to Turbojet aircraft only.
- NOTE: RNAV 1.
- NOTE: Radar Required.
- NOTE: For non-GPS equipped aircraft, AHN, GSO, ATL and PDK must be operational.

NOTE: Chart not to scale.

SE-4, 01 JUL 2010 to 29 JUL 2010