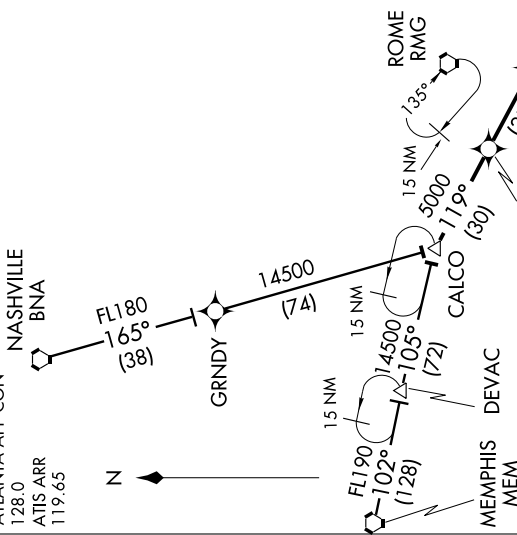


SE-4, 01 JUL 2010 to 29 JUL 2010

ATLANTA APP CON
128.0
ATIS ARR
119.65



HERKO THREE ARRIVAL (RNAV)
(HERKO.HERKO3) 10154

MEMPHIS TRANSITION (MEM.HERKO3):
NASHVILLE TRANSITION (BNA.HERKO3):

From over CALCO via 119° track to VIKINN, then via 119° track to HERKO, then via 121° track to RPTOR, then via 137° track to NOTRE, thence via assigned runway transition.
Landing West Rwy 26R/L: From over NOTRE via 092° track to NOFV, then via 092° track to FANFW, then via 092° track to HAVAD, then via 091° track to IGEBE, then via 091° heading. Expect radar vectors.

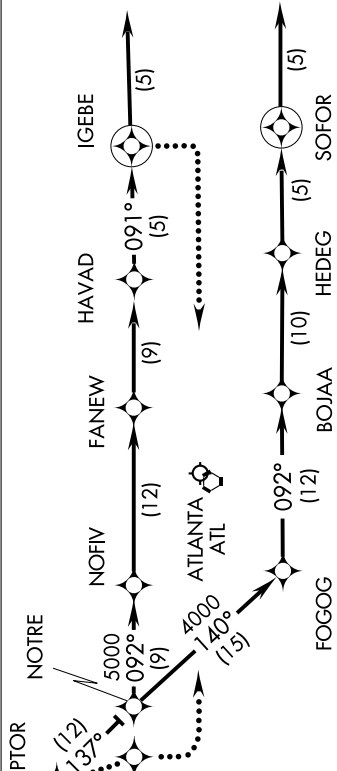
Landing West Rwy 28, 27L/R: From over NOTRE via 140° track to FOGOG, then via 092° track to BOJAA, then via 092° track to HEDEG, then via 092° track to SOFOR, then via 092° heading. Expect radar vectors.

Landing East Rwy 8L/R, 9L/R, 10: From over NOTRE via 092° track to NOFV, then via 092° track to FANFW, then via 092° track to HAVAD, then via 091° track to IGEBE, then via 091° heading. Expect radar vectors to final approach course after RPTOR.

LOST COMMUNICATIONS:

EAST OPERATIONS: At RPTOR track to WOTBA, fly heading 180°, maintain 5000; intercept and execute ILS or LOC Rwy 8L approach. If unable, track to ATL VORTAC and hold, maintain 5000.

WEST OPERATIONS: At IGEBE fly heading 180°, maintain 5000; intercept and execute ILS or LOC Rwy 26R approach. If unable, proceed to ATL VORTAC and hold, maintain 5000.



- NOTE: DME/DME IRU or GPS Required.
- NOTE: RNAV 1.
- NOTE: Radar Required.
- NOTE: This STAR applicable to Turbojet aircraft only.
- NOTE: For non-GPS equipped aircraft: PDK must be operational.

NOTE: Chart not to scale.

SE-4, 01 JUL 2010 to 29 JUL 2010