

ILS or LOC RWY 10

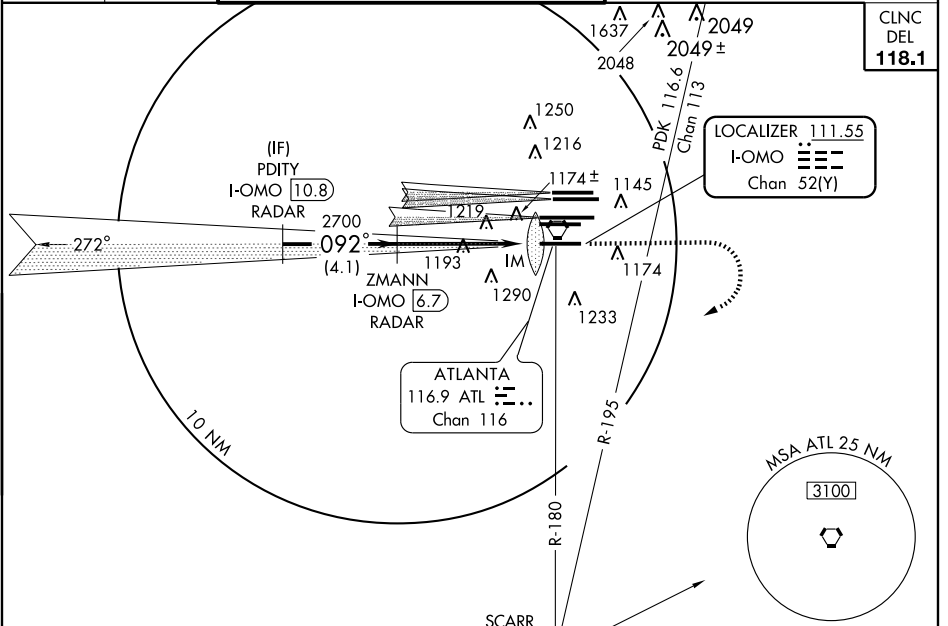
ATLANTA/HARTSFIELD - JACKSON ATLANTA INTL (ATL)

LOC/DME I-OMO 111.55 Chan 52 (Y)	APP CRS 092°	Rwy Idg 9000 TDZE 1000 Apt Elev 1026
--	------------------------	---

Simultaneous approach authorized with Rwy 9L or 8R or 8L, or Rwys 9L and 8L.
LOC Procedure NA during simultaneous operations.
Radar or DME Required.

ALSIF-2 MISSED APPROACH: Climb to 1400 then climbing right turn to 3500 via ATL VORTAC R-180 to SCARR Int/ATL 15 DME and hold.

ATIS ARR 119.65	ATLANTA APP CON DEP 127.9 379.9	ATLANTA TOWER 8L-26R 8R-26L 9L-27R 9R-27L 10-28 DEP 119.1 125.325 123.85 119.3 119.5 381.6	ALL RWYS (8L-26R,8R-26L) (9L-27R,9R-27L) 10-28 RWYS 121.9 121.75 121.65 381.6	GND CON RWYS 121.9 121.75 121.65 381.6	ALL RWYS
---------------------------	--	---	--	--	-------------



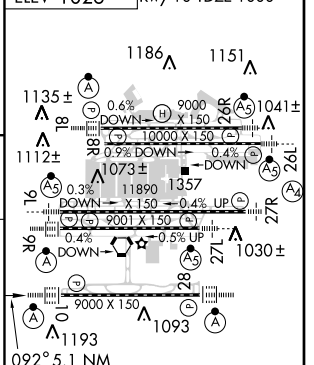
SE-4, 08 JUN 2006 to 06 JUL 2006

SE-4, 08 JUN 2006 to 06 JUL 2006

RADAR REQUIRED



ELEV 1026 Rwy 10 TDZE 1000'



CATEGORY	A	B	C	D
S-ILS 10	1200/18		200 (200-½)	
S-LOC 10	1500/24	500 (500-½)	1500/40 500 (500-¾)	1500/50 500 (500-1)

092° 5.1 NM from FAF

HIRL all runways
TDZ/CL Rwys 8L, 8R, 9R, 10, 26R, 27L and 28

FAF to MAP 5.1 NM

Knots	60	90	120	150	180
Min:Sec	5:06	3:24	2:33	2:02	1:42

ILS or LOC RWY 10