

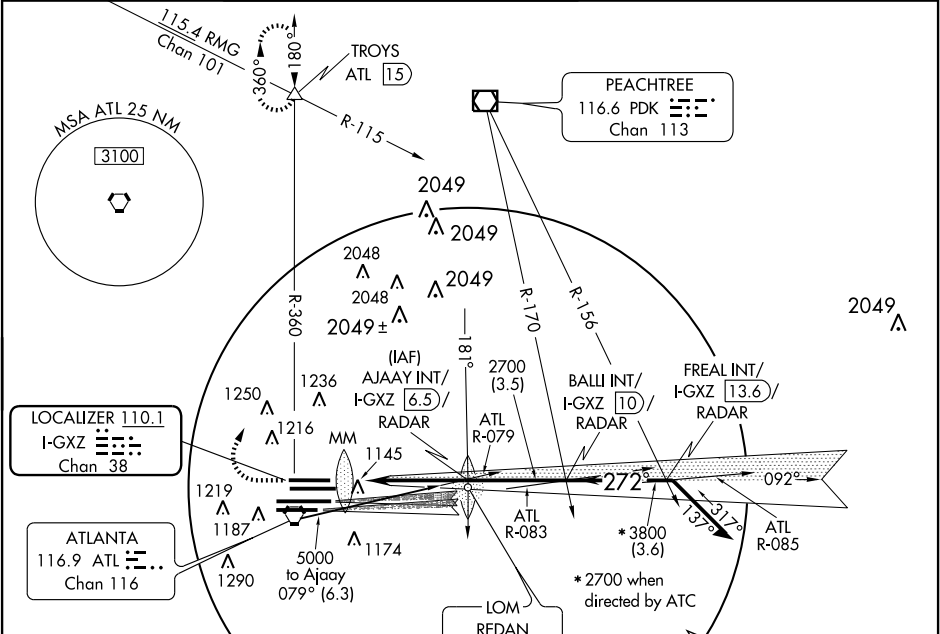
ATLANTA/
HARTSFIELD - ILS RWY 26R
JACKSON ATLANTA INTL (ATL)

LOC/DME I-GXZ 110.1 Chan 38	APP CRS 272°	Rwy 26L Idg 10000 TDZE 995 Apt Elev 1026	Rwy 26R Idg 9000 TDZE 990 Apt Elev 1026
---	------------------------	---	--

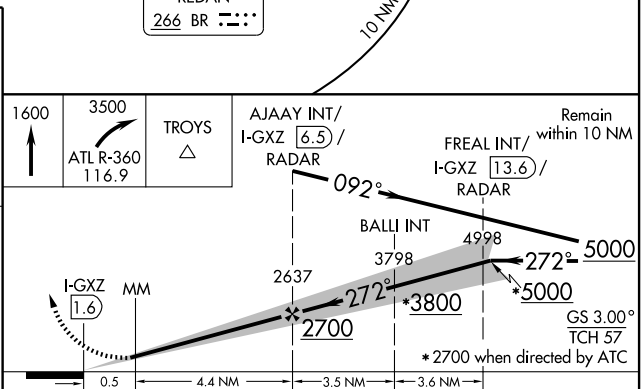
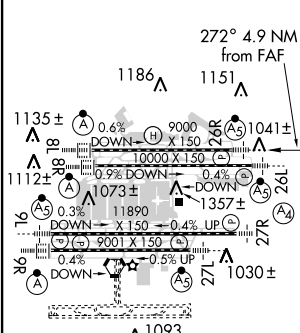
Simultaneous approach authorized with Rwy 27L or 27R. For inoperative **MALS**R, increase Sidesstep Rwy 26L Cat A and B visibility to RVR 6000, and Cat C visibility to 1¾, and Cat D visibility to 2¼.

MALS R MISSED APPROACH: Climb to 1600 then climbing right turn to 3500 via ATL R-360 to TROYS Int/ATL 15 DME and hold.

ATIS ARR 119.65 DEP 125.55	ATLANTA APP CON 127.9 379.9	ATLANTA TOWER 119.5 125.325 381.6 Rwys 8L-26R, 8R-26L Rwys 9L-27R, 9R-27L	GND CON 121.9 381.6 Rwys 8L-26R, 8R-26L Rwys 9L-27R, 9R-27L	CLNC DEL 118.1
--	--	---	---	-----------------------------



ELEV 1026	Rwy 26L TDZE 995'	Rwy 26R TDZE 990'
-----------	-------------------	-------------------



CATEGORY	A	B	C	D
S-ILS 26R	1190/18 200 (200-½)			
S-LOC 26R	1380/24	390 (400-½)	1380/60	1380/40 390 (400-¾)
SIDESTEP RWY 26L	1380/50	385 (400-1)	1380/60 385 (400-1¼)	1380-1¾ 385 (400-1¾)

ATLANTA, GEORGIA
Amdt 3 05300

ATLANTA/ HARTSFIELD - JACKSON ATLANTA INTL (ATL)
33° 38'N-84° 26'W
ILS RWY 26R

SE-4, 24 NOV 2005 to 22 DEC 2005

SE-4, 24 NOV 2005 to 22 DEC 2005