

ATLANTA, GEORGIA

AL-26 (FAA)

ATLANTA/  
HARTSFIELD - ILS RWY 8L  
JACKSON ATLANTA INTL (ATL)

LOC/DME I-HFW <b>109.3</b> Chan <b>30</b>	APP CRS <b>092°</b>	Rwy 8L Idg <b>9000</b> TDZE <b>1015</b> Apt Elev <b>1026</b>	Rwy 8R Idg <b>10000</b> TDZE <b>1024</b> Apt Elev <b>1026</b>
---	------------------------	--	---

**▼** Inoperative table does not apply to sidestep Rwy 8R Cats A and B. Simultaneous approach authorized with Rwys 9L or 9R.

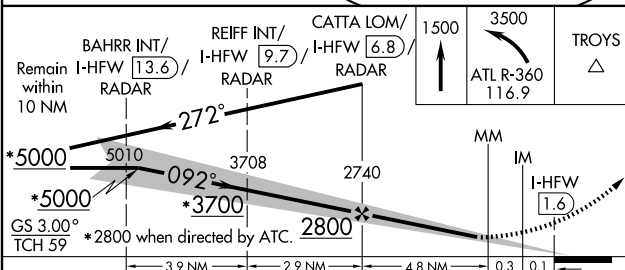
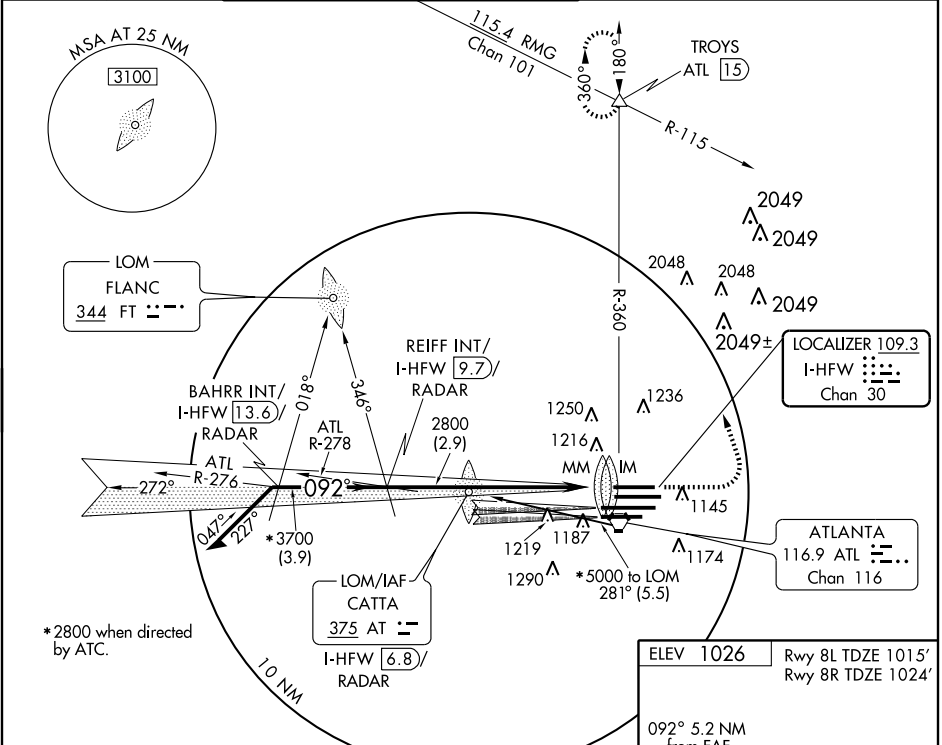


**MISSED APPROACH:** Climb to 1500 then climbing left turn to 3500 via ATL R-360 to TROYS Int/ATL 1.5 DME and hold.

ATIS ARR <b>119.65</b> DEP <b>125.55</b>	ATLANTA APP CON <b>127.9 379.9</b>	ATLANTA TOWER <b>119.5 125.325 381.6</b> Rwys 8L-26R, 8R-26L Rwys 9L-27R, 9R-27L	GND CON <b>121.9 381.6</b> Rwys 8L-26R, 8R-26L Rwys 9L-27R, 9R-27L	CLNC DEL <b>118.1</b>
--	--	---	---	-----------------------------

SE-4, 24 NOV 2005 to 22 DEC 2005

SE-4, 24 NOV 2005 to 22 DEC 2005



ELEV 1026	Rwy 8L TDZE 1015'	Rwy 8R TDZE 1024'
092° 5.2 NM from FAF		
HIRL all runways		
TDZ/CL Rwys 8L, 8R, 9R, 26R, and 27L		
FAF to MAP 5.2 NM		
Knots	60	90 120 150 180
Min:Sec	5:12	3:28 2:36 2:05 1:44

CATEGORY	A	B	C	D
S-ILS 8L	1215/18 200 (200-½)			
S-LOC 8L	1440/24	425 (500-½)	1440/40	425 (500-¾)
CIRCLING	NA			
SIDESTEP Rwy 8R	1440/50	416 (500-1)	1440-1½	416 (500-1½)

ATLANTA, GEORGIA  
Amdt 2 05300

ATLANTA/HARTSFIELD - JACKSON ATLANTA INTL (ATL)  
33°38'N-84°26'W  
**ILS RWY 8L**