

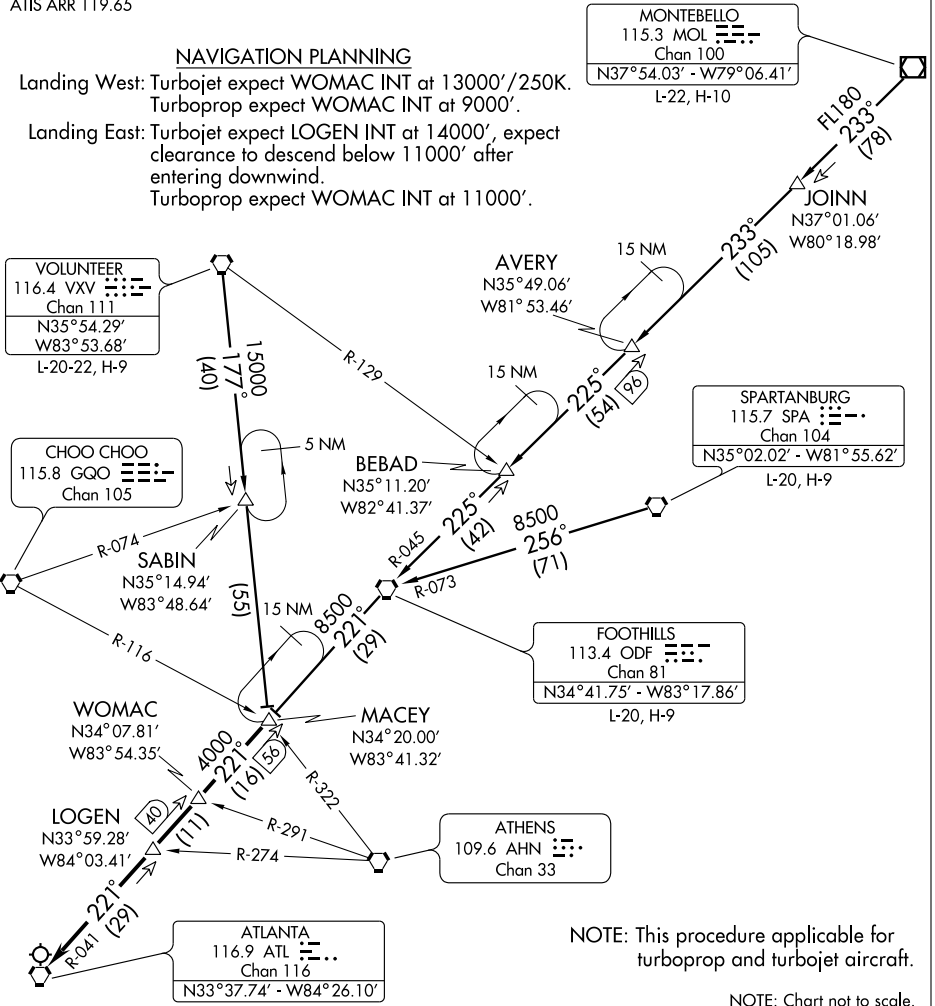
# MACEY TWO ARRIVAL (MACEY.MACEY2)

ATIS ARR 119.65

## NAVIGATION PLANNING

Landing West: Turbojet expect WOMAC INT at 13000'/250K.  
 Turboprop expect WOMAC INT at 9000'.

Landing East: Turbojet expect LOGEN INT at 14000', expect clearance to descend below 11000' after entering downwind.  
 Turboprop expect WOMAC INT at 11000'.



SE-4, 24 NOV 2005 to 22 DEC 2005

SE-4, 24 NOV 2005 to 22 DEC 2005

NOTE: This procedure applicable for turboprop and turbojet aircraft.

NOTE: Chart not to scale.

**FOOTHILLS TRANSITION (ODF.MACEY2):** From over ODF VORTAC via ATL R-041 to MACEY INT. Thence. . .

**MONTEBELLO TRANSITION (MOL.MACEY2):** From over MOL VOR/DME via MOL R-233 and ODF R-045 to ODF VORTAC, then via ATL R-041 to MACEY INT. Thence. . .

**SPARTANBURG TRANSITION (SPA.MACEY2):** From over SPA VORTAC via SPA R-256 and ODF R-073 to ODF VORTAC, then via ATL R-041 to MACEY INT. Thence. . .

**VOLUNTEER TRANSITION (VXX.MACEY2):** From over VXX VORTAC via VXX R-177 to MACEY INT. Thence. . .

. . . From over MACEY INT via ATL R-041 to ATL VORTAC. Expect radar vector to final approach course after LOGEN INT.

# MACEY TWO ARRIVAL (MACEY.MACEY2)