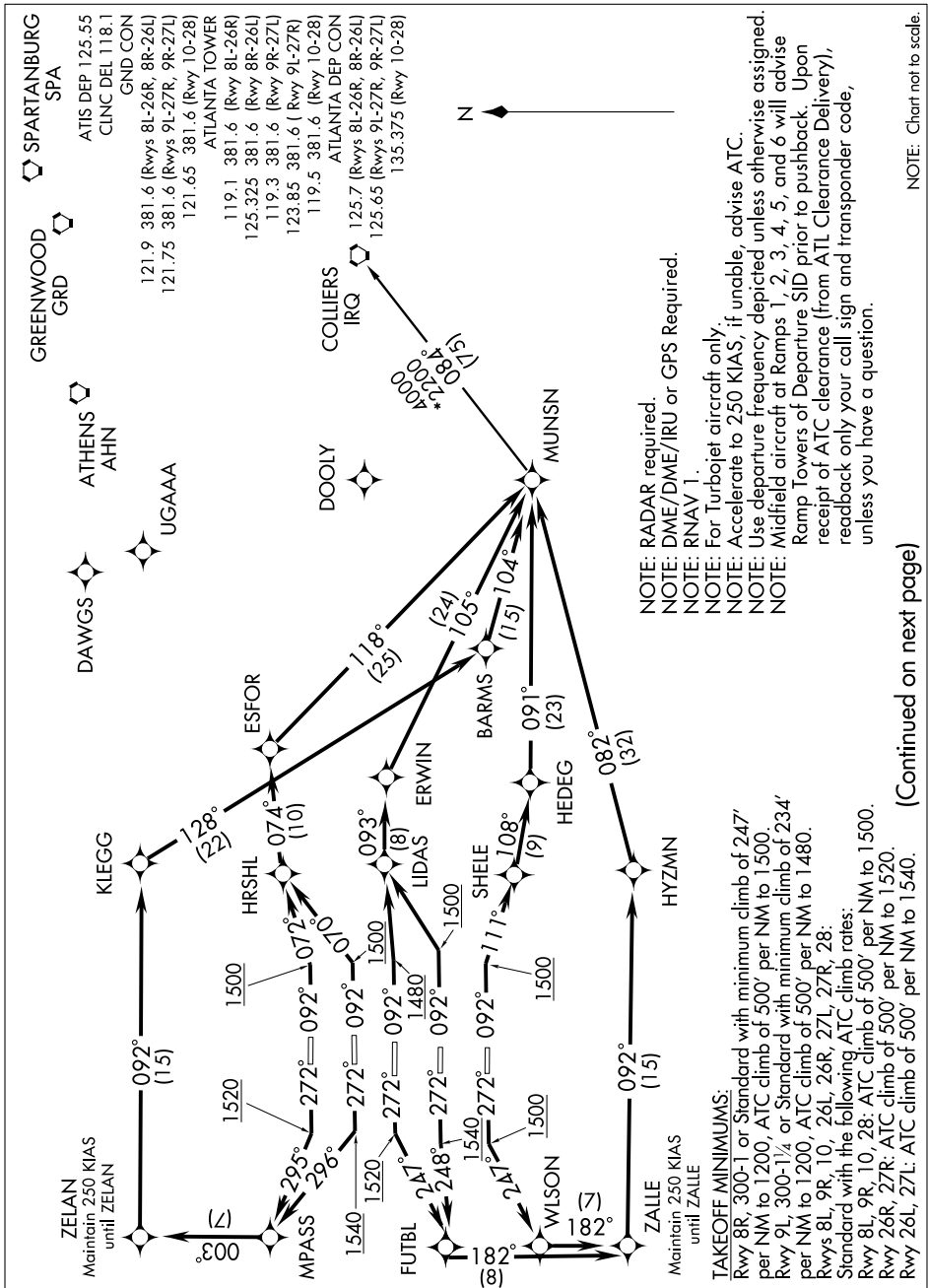


MUNSN FOUR DEPARTURE (RNAV)

SL-26 (FAA)

ATLANTA, GEORGIA

SE-4, 01 JUL 2010 to 29 JUL 2010



(Continued on next page)

NOTE: Chart not to scale.

MUNSN FOUR DEPARTURE (RNAV)

SE-4, 01 JUL 2010 to 29 JUL 2010

TAKEOFF MINIMUMS:
 Rwy 8R, 300-1 or Standard with minimum climb of 247' per NM to 1200, ATC climb of 500' per NM to 1500.
 Rwy 9L, 300-1/4 or Standard with minimum climb of 234' per NM to 1200, ATC climb of 500' per NM to 1480.
 Rwys 8L, 9R, 10, 26L, 26R, 27L, 27R, 28.
 Standard with the following ATC climb rates:
 Rwy 8L, 9R, 10, 28: ATC climb of 500' per NM to 1500.
 Rwy 26R, 27R: ATC climb of 500' per NM to 1520.
 Rwy 26L, 27L: ATC climb of 500' per NM to 1540.