

PNUTT FIVE DEPARTURE (RNAV)

SL-26 (FAA)

ATLANTA, GEORGIA

ATIS DEP 125.55
CLNC DEL 118.1
GND CON

121.9 381.6 (Rwys 8L-26R, 8R-26L)
121.75 381.6 (Rwys 9L-27R, 9R-27L)
121.65 381.6 (Rwy 10-28)

ATLANTA TOWER

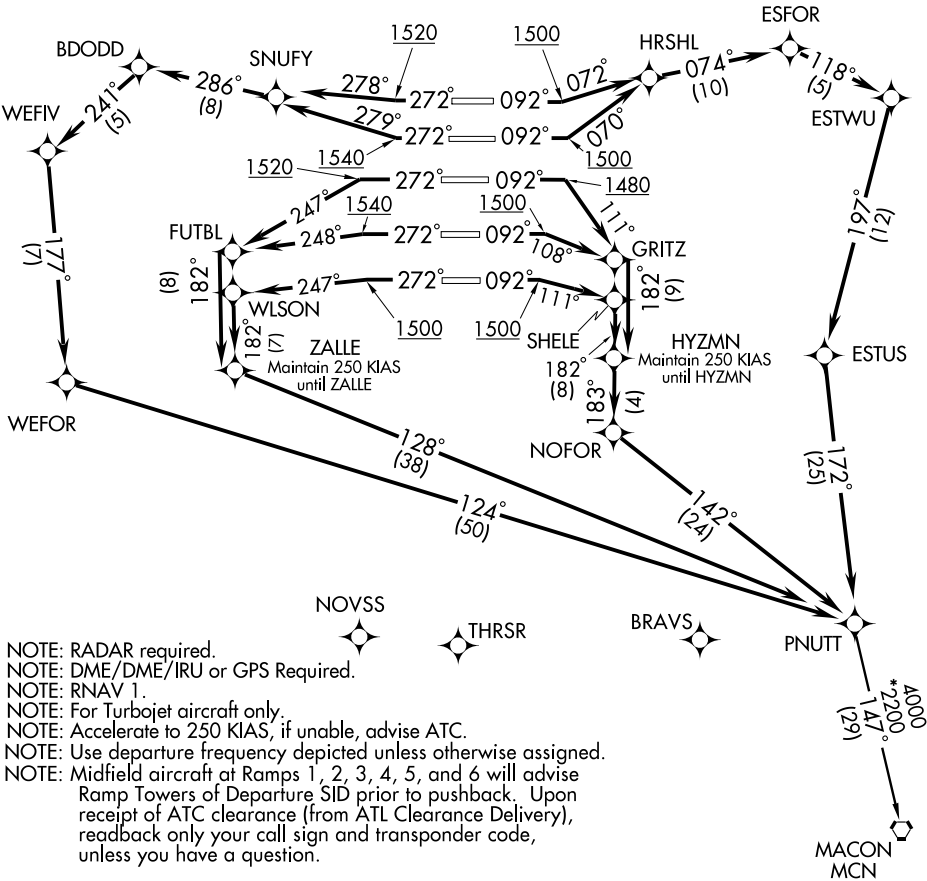
119.1 381.6 (Rwy 8L-26R)
125.325 381.6 (Rwy 8R-26L)
119.3 381.6 (Rwy 9R-27L)
123.85 381.6 (Rwy 9L-27R)
119.5 381.6 (Rwy 10-28)

ATLANTA DEP CON

125.7 (Rwys 8L-26R, 8R-26L)
125.65 (Rwys 9L-27R, 9R-27L)
135.375 (Rwy 10-28)

TAKEOFF MINIMUMS:

Rwy 8R, 300-1 or Standard with minimum climb of 247' per NM to 1200, ATC climb of 500' per NM to 1500.
Rwy 9L, 300-1¼ or Standard with minimum climb of 234' per NM to 1200, ATC climb of 500' per NM to 1480.
Rwys 8L, 9R, 10, 26L, 26R, 27L, 27R, 28 Standard with the following ATC climb rates:
Rwy 8L, 9R, 10, 28: ATC climb of 500' per NM to 1500.
Rwy 26R, 27R: ATC climb of 500' per NM to 1520.
Rwy 26L, 27L: ATC climb of 500' per NM to 1540.



NOTE: RADAR required.
 NOTE: DME/DME/IRU or GPS Required.
 NOTE: RNAV 1.
 NOTE: For Turbojet aircraft only.
 NOTE: Accelerate to 250 KIAS, if unable, advise ATC.
 NOTE: Use departure frequency depicted unless otherwise assigned.
 NOTE: Midfield aircraft at Ramps 1, 2, 3, 4, 5, and 6 will advise Ramp Towers of Departure SID prior to pushback. Upon receipt of ATC clearance (from ATL Clearance Delivery), readback only your call sign and transponder code, unless you have a question.

COLUMBUS
CSG

SARGE

LUCKK

WALET

(Continued on next page)

NOTE: Chart not to scale

PNUTT FIVE DEPARTURE (RNAV)

ATLANTA, GEORGIA

SE-4, 01 JUL 2010 to 29 JUL 2010

SE-4, 01 JUL 2010 to 29 JUL 2010