

RNAV (GPS) RWY 26L

ATLANTA/ HARTSFIELD - JACKSON ATLANTA INTL (ATL)

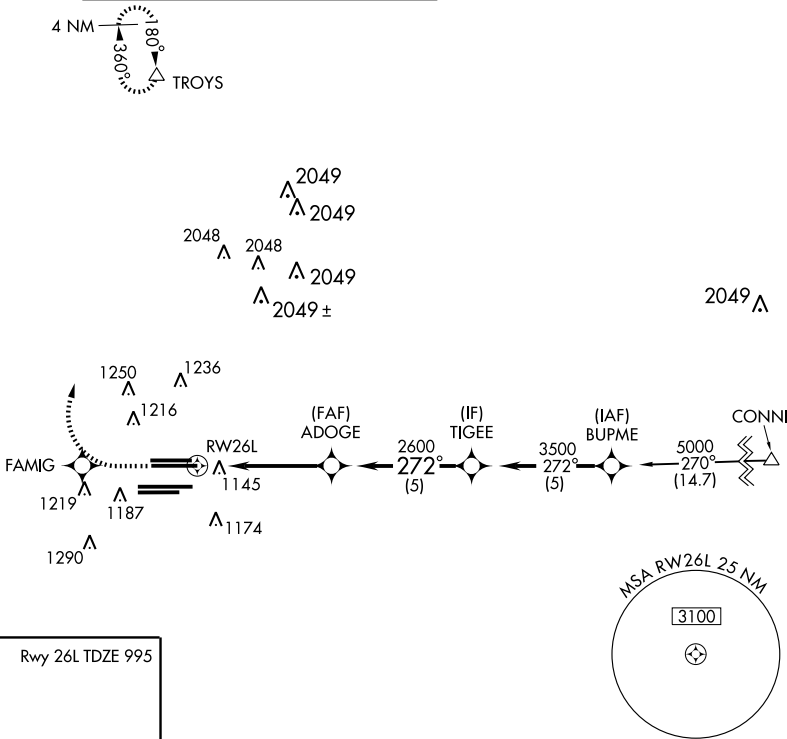
APP CRS	Rwy Idg	10000
272°	TDZE	995
	Apt Elev	1026

▼ For inoperative MALSR increase LNAV Cat D visibility to RVR 6000. Baro VNAV NA below -17°C (2°F).
▲ NA GPS or RNP-0.3 Required. DME/DME RNP-0.3 NA.



MISSED APPROACH: Climb to 3500 via 272° course to FAMIG WP then right turn via 013° course to TROYS WP and hold.

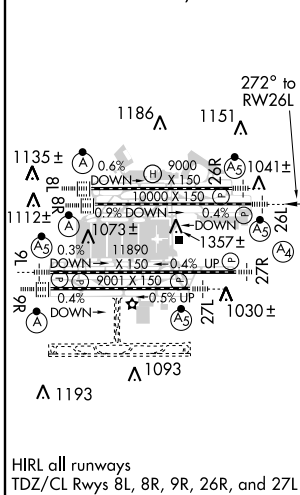
ATIS	ATLANTA	ATLANTA TOWER	GND CON	CLNC DEL
ARR 119.65	APP CON	119.5 125.325 381.6 Rwys 8L-26R, 8R-26L	121.9 381.6 Rwys 8L-26R, 8R-26L	
DEP 125.55	127.9 379.9	119.1 123.85 381.6 Rwys 9L-27R, 9R-27L	121.75 381.6 Rwys 9L-27R, 9R-27L	118.1



SE-4, 24 NOV 2005 to 22 DEC 2005

SE-4, 24 NOV 2005 to 22 DEC 2005

ELEV 1026 Rwy 26L TDZE 995



	3500	FAMIG	TROYS	TIGEE
	CRS 272°	CRS 013°		
	*RNAV only.		ADOGE	3500
	*1.1 NM to RWY 26L		272°	Procedure Turn NA
	RWY 26L		2600	GS 3.00°
	1.1	3.7 NM	5 NM	TCH 55
CATEGORY	A	B	C	D
GLS (PA) DA	NA			
LNAV/VNAV DA	1400/50 405 (400-1)			
LNAV MDA	1400/24 405 (400-½)		1400/40 405 (400-¾) 1400/50 405 (400-1)	
CIRCLING	NA			