

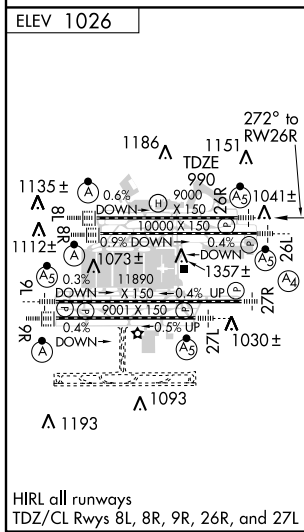
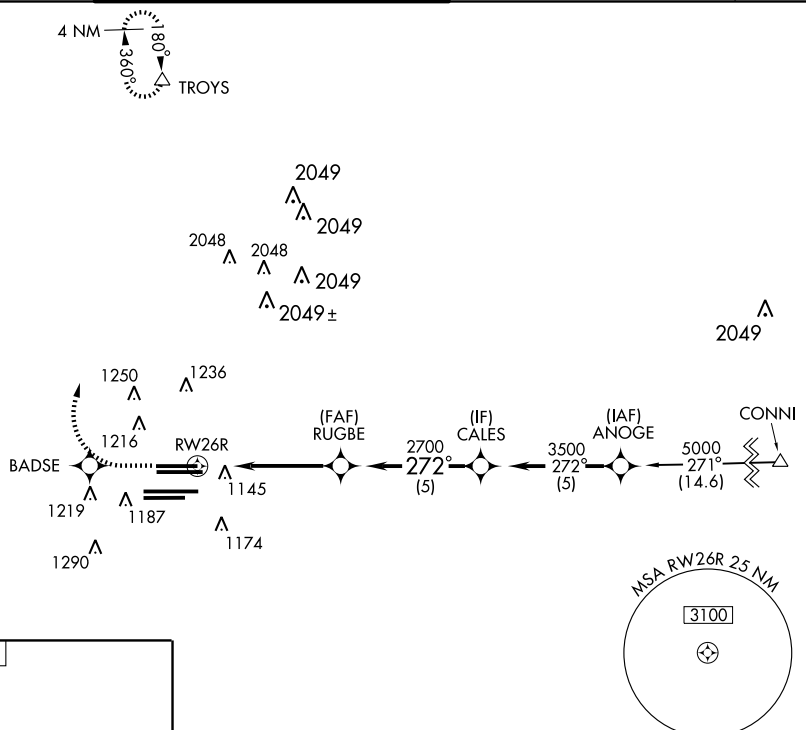
RNAV (GPS) RWY 26R

ATLANTA/ HARTSFIELD - JACKSON ATLANTA INTL (ATL)

APP CRS 272°	Rwy Idg 9000
	TDZE 990
	Apt Elev 1026

Baro VNAV NA below -17° C (2° F). GPS or RNP-0.3 Required. DME/DME RNP-0.3 NA.	MALSR 	MISSED APPROACH: Climb to 3500 via 272° course to BADSE WP then right turn via 013° course to TROYS WP and hold.
--	-----------	--

ATIS ARR 119.65 DEP 125.55	ATLANTA APP CON 127.9 379.9	ATLANTA TOWER 119.5 125.325 381.6 Rwys 8L-26R, 8R-26L 119.1 123.85 381.6 Rwys 9L-27R, 9R-27L	GND CON Rwys 8L-26R, 8R-26L 121.9 381.6 Rwys 9L-27R, 9R-27L 121.75 381.6	CLNC DEL 118.1
--	--	--	--	-----------------------------



3500	BADSE	TROYS	CALES	
↑ CRS 272°				
	↑ CRS 013°			
*RNAV only.		RUGBE	3500	
	↑ *1.4 NM to RWY26R	↘ 272°	Procedure Turn NA	
	↘ 272°	↘ 2700	GS 3.00°	
	1.4	3.8 NM	TCH 55	
CATEGORY	A	B	C	D
GLS (PA) DA	NA			
LNAV/VNAV DA	1400/50 410 (400-1)			
LNAV MDA	1480/24 490 (500-½)	1480/40 490 (500-¾)	1480/50 490 (500-1)	
CIRCLING	NA			

SE-4, 24 NOV 2005 to 22 DEC 2005

SE-4, 24 NOV 2005 to 22 DEC 2005