

ATLANTA, GEORGIA

AL-26 (FAA)

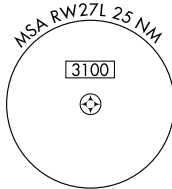
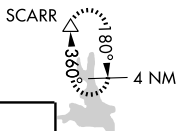
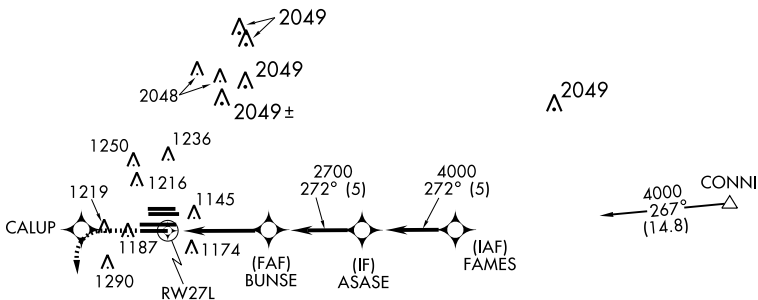
APP CRS 272°	Rwy Idg 9001
	TDZE 999
	Apt Elev 1026

RNAV (GPS) RWY 27L

ATLANTA/ HARTSFIELD - JACKSON ATLANTA INTL (ATL)

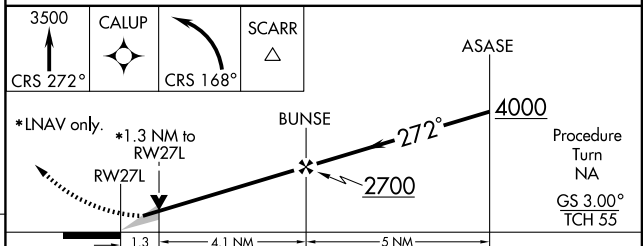
NA	Baro VNAV NA below -17°C (2°F). GPS or RNP-0.3 Required. DME/DME RNP-0.3 NA.		MISSED APPROACH: Climb to 3500 via 272° course to CALUP WP then left turn via 168° course to SCARR WP and hold.
-----------	------------------------------------------------------------------------------------	--	-----------------------------------------------------------------------------------------------------------------

ATIS ARR 119.65	ATLANTA APP CON 127.9 379.9	ATLANTA TOWER 119.5 125.325 381.6	Rwys 8L-26R, 8R-26L 121.9 381.6	GND CON Rwys 8L-26R, 8R-26L 121.75 381.6	CLNC DEL 118.1
DEP 125.55			Rwys 9L-27R, 9R-27L	Rwys 9L-27R, 9R-27L	



ELEV 1026

HIRL all runways
TDZ/CL Rwys 8L, 8R, 9R, 26R, and 27L



CATEGORY	A	B	C	D
GLS (PA) DA	NA			
LNAV/VNAV DA	1380/40 381 (400-¾)			
LNAV MDA	1460/24 461 (500-½)	1460/40 461 (500-¾)	1460/50 461 (500-1)	
CIRCLING	NA			

ATLANTA, GEORGIA
Orig-A 05300

ATLANTA/ HARTSFIELD - JACKSON ATLANTA INTL (ATL)
33° 38'N-84° 26'W

RNAV (GPS) RWY 27L

SE-4, 24 NOV 2005 to 22 DEC 2005

SE-4, 24 NOV 2005 to 22 DEC 2005