

# RNAV (GPS) RWY 8R

ATLANTA/ HARTSFIELD - JACKSON ATLANTA INTL (ATL)

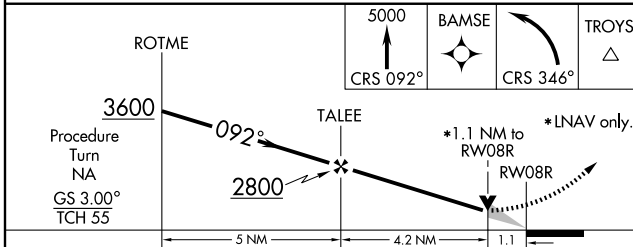
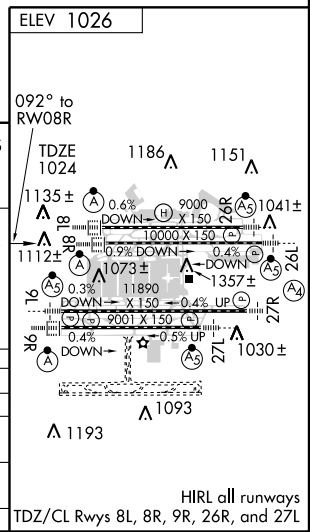
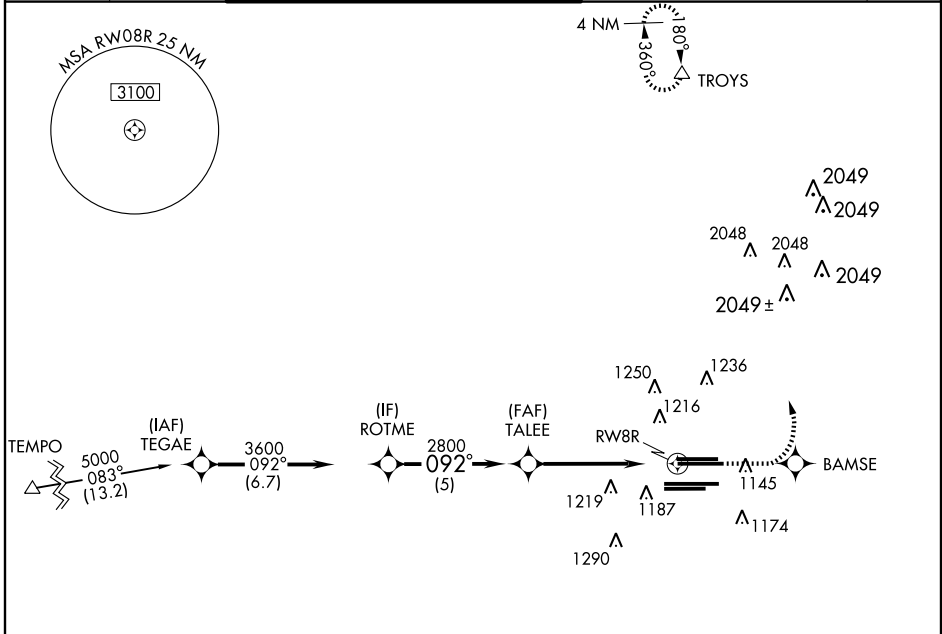
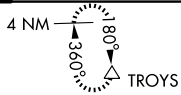
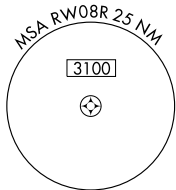
APP CRS	Rwy Idg	<b>10000</b>
<b>092°</b>	TDZE	<b>1024</b>
	Apt Elev	<b>1026</b>

For inoperative ALSF-2 increase LNAV Cat D visibility to RVR 6000.  
 NA Baro VNAV NA below -17° C (2° F).  
 GPS or RNP-0.3 Required. DME/DME RNP-0.3 NA.

ALSF-2

**MISSED APPROACH:** Climb to 5000 via 092° course to BAMSE WP then left turn via 346° course to TROYS WP and hold.

ATIS	ATLANTA	ATLANTA TOWER			GND CON	CLNC
ARR <b>119.65</b>	APP CON	<b>119.5 125.325 381.6</b>	Rwys 8L-26R, 8R-26L	<b>121.9 381.6</b>	Rwys 8L-26R, 8R-26L	DEL
DEP <b>125.55</b>	<b>127.9 379.9</b>	<b>119.1 123.85 381.6</b>	Rwys 9L-27R, 9R-27L	<b>121.75 381.6</b>	Rwys 9L-27R, 9R-27L	<b>118.1</b>



CATEGORY	A			
GLS (PA) DA	NA			
LNAV/ VNAV	1440/50 416 (500-1)			
LNAV MDA	1440/24 416 (500-1/2)	1440/40 416 (500-3/4)	1440/50 416 (500-1)	
CIRCLING	NA			

# RNAV (GPS) RWY 8R

SE-4, 24 NOV 2005 to 22 DEC 2005

SE-4, 24 NOV 2005 to 22 DEC 2005