

(WOMAC.WOMAC2) 05244

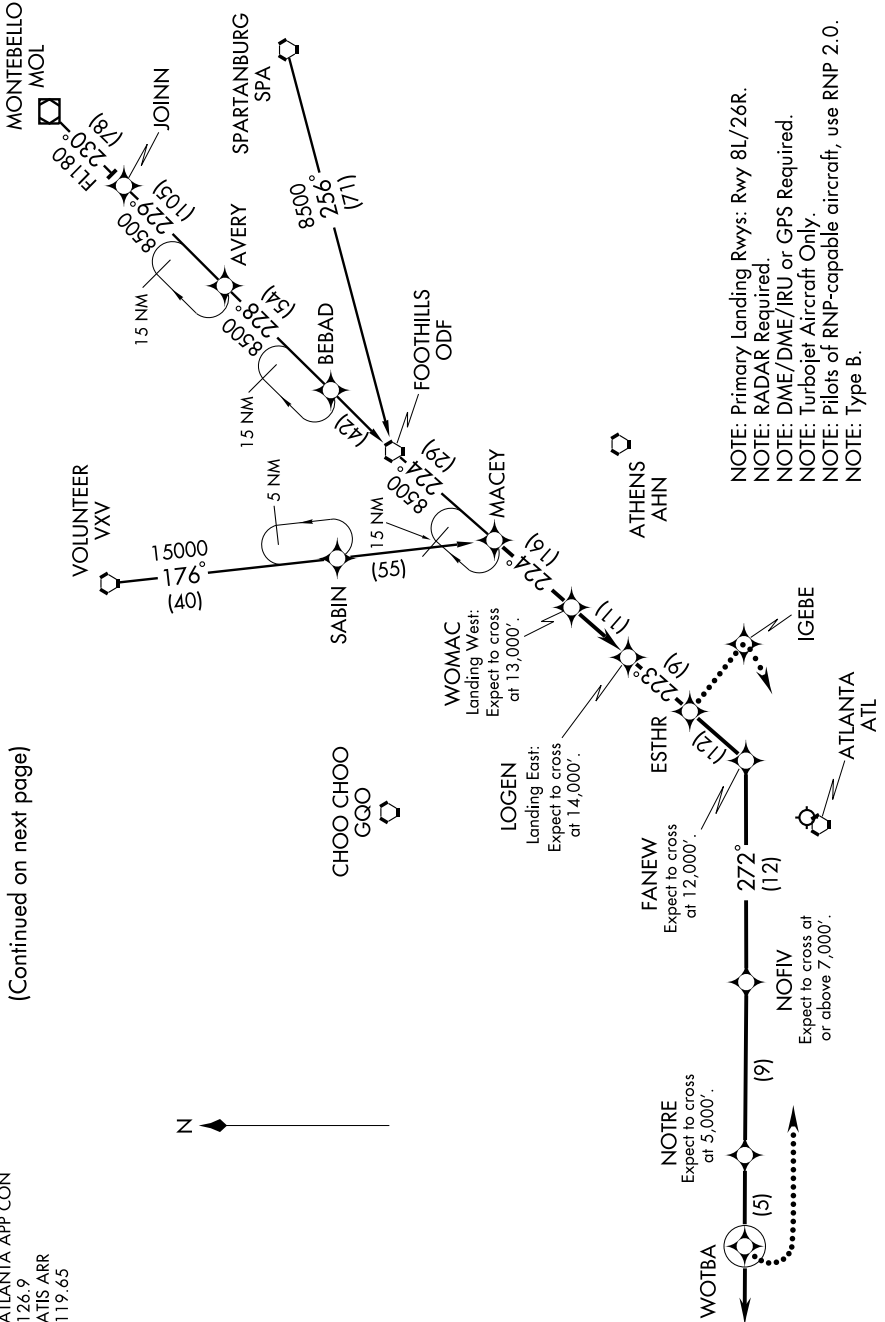
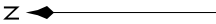
# WOMAC TWO ARRIVAL (RNAV) ST-26 (FAA)

HARTSFIELD - JACKSON ATLANTA INTL  
ATLANTA, GEORGIA

SE-4, 24 NOV 2005 to 22 DEC 2005

(Continued on next page)

ATLANTA APP CON  
126.9  
ATIS ARR  
119.65



NOTE: Primary Landing Rwy: Rwy 8L/26R.  
 NOTE: RADAR Required.  
 NOTE: DME/DME/IRU or GPS Required.  
 NOTE: Turboprop Aircraft Only.  
 NOTE: Pilots of RNP-capable aircraft, use RNP 2.0.  
 NOTE: Type B.

NOTE: Chart not to scale.

WOMAC TWO ARRIVAL (RNAV)  
(WOMAC.WOMAC2) 05244

ATLANTA, GEORGIA  
HARTSFIELD - JACKSON ATLANTA INTL

SE-4, 24 NOV 2005 to 22 DEC 2005